



CBS  
STUDIO  
CENTER™

# Newsletter

DECEMBER 2009

## A LOT of Great Photography

By Christine J. Choi

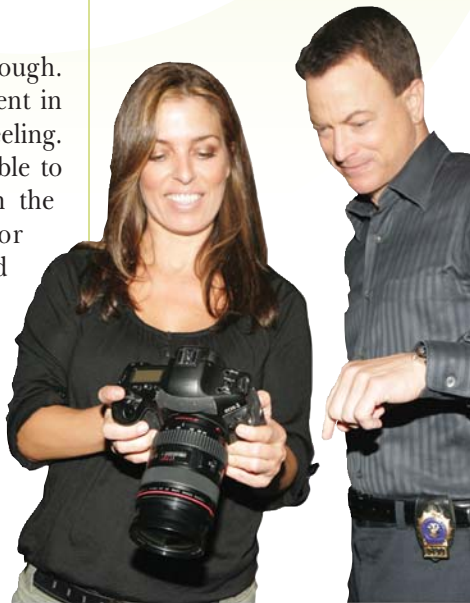
Sometimes words are not enough. Photos help relive a particular moment in time and capture an emotion or feeling. Through photos, we as viewers are able to supplement the words we read with the pictures we see. CBS Senior photographers Monty Brinton and Cliff Lipson, along with photographer Sonja Flemming, do an amazing job in capturing the images of television shows that are imprinted into our minds.

CBS shows like *Gary Unmarried*, *CSI: NY*, *Big Brother* and *Accidentally on Purpose* have the advantage of having these incredible photographers at their fingertips on the Radford lot. Paula Marshall from *Gary Unmarried* says about Brinton, "Feeling comfortable in front of the camera is a must. Whether he is shooting behind the scenes, or on a gallery shoot, I never worry. Being a wannabe photographer myself I appreciate how hard it is to get that perfect photo. Just call Monty!"

Brinton has worked underwater on *NCIS*, *Cold Case* and most recently *CSI: NY* with Hill Harper. "Shooting underwater is completely different," says Brinton. "I'm using scuba gear, breathing underwater, and remaining very aware of my surroundings so I don't drift into the camera or get in the way."

During Brinton's 19 years at CBS he has spent a good deal of time globetrotting for *Survivor* and *The Amazing Race*. "I've been very blessed," muses Brinton. "I've been to places and done things people don't usually visit or do, so that's cool."

Senior Photographer Cliff Lipson is closely associated with CBS' *WATCH!*



CBS Staff Photographer Sonja Flemming (left) shows Gary Sinise of the CBS series *CSI: NY* her recent unit coverage done on the set, located on the CBS Studio Center lot in Studio City, CA.

Photo: Lisette M. Azari/CBS  
©2009 CBS Broadcasting Inc.  
All Rights Reserved.



Photo: Sonja Flemming/CBS ©2009 CBS Broadcasting Inc.



Photo: Monty Brinton/CBS ©2009 CBS Broadcasting Inc.



CBS Senior Photographer Monty Brinton (right) with Paula Marshall of the CBS series *GARY UNMARRIED* between takes on the set, located on the CBS Studio Center lot in Studio City, CA.

Photo: Francis Cavanaugh/CBS  
©2009 CBS Broadcasting Inc.  
All Rights Reserved.

# Studio Services

Carla's Café Commissary . . . . .	5692
Car Wash . . . . .	5042
Client Services . . . . .	5099
Emergency Line . . . . .	5555
Grip Dept . . . . .	5711
Hair Salon . . . . .	6000
Internet Access . . . . .	5218
Joe's Gym . . . . .	5099
Lighting . . . . .	5349
Notary . . . . .	5837
Parking Signs . . . . .	5670
Paint Dept. . . . .	5396 / 5858
Safety Hotline . . . . .	6078
Sign Shop . . . . .	5395
Special Effects . . . . .	5671
Supply Station . . . . .	5001
Take 5 Coffee . . . . .	5979

## RECYCLING

Stage and Media . . . . .	5661
<i>Paint, Solvents, Spray Cans, Rags, Brush Wash, Batteries, Videotape, CDs, DVDs</i>	
Office Recycling . . . . .	5966
<i>Toner Cartridges, Paper, Cans</i>	
E-Waste Recycling . . . . .	5396
<i>Anything with a circuit board, ie TVs, Monitors, Recorders, Keyboards, Florescent Lights</i>	

# Safety & Security

## Holiday Security Tips

The holiday season unfortunately tends to bring forth an increase in theft. Employees and tenants should take the following precautions to help ensure the security of their belongings.

- Do not leave wallets, purses or cash unattended at any time.
- Secure laptop computers with a locking device or store in a secure area when not in use.
- Offices and dressing rooms should be secured when unoccupied.
- Do not leave gifts or valuables in offices or dressing rooms overnight unless the items are locked in a desk or cabinet.
- Do not hold security doors open for others.
- Do not allow unaccompanied delivery persons or couriers to wander though offices.
- Report any suspicious persons to Security immediately.

Have a SAFE and happy holiday season!

## Newsletter Staff

Contributing Editor Marsha Gorodkin  
Design Elizabeth Gulick

# PRODUCTION SCHEDULE



- CSI:NY  
*(CBS PRODUCTIONS/ CBS)*
- ENTERTAINMENT TONIGHT  
*(CBS TV DISTRIBUTION/ CBS)*
- THE INSIDER  
*(CBS TV DISTRIBUTION/ CBS)*
- ROMANTICALLY CHALLENGED  
*(WARNER BROS TV/ ABC)*
- GARY UNMARRIED  
*(FTP PRODUCTIONS/ CBS)*
- UNTITLED MELISSA / JOEY PROJECT  
*(PRODCO, INC./ ABC FAMILY)*
- FUNNY IN FARSI PILOT  
*(FTP PRODUCTIONS / ABC)*
- COOK ALONG WITH GORDON RAMSEY LIVE  
*(RUMPOLE, INC. / FOX)*
- ACCIDENTALLY ON PURPOSE  
*(CBS PRODUCTIONS / CBS)*
- RETIRED AT 35  
*(HUDSON STREET PRODUCTIONS/ TV LAND)*
- PARKS AND RECREATION  
*(OPEN 4 BUSINESS / NBC)*
- 100 QUESTIONS FOR CHARLOTTE  
*(OPEN 4 BUSINESS/ NBC)*
- GREEK  
*(ZETA BETA PRODUCTIONS/ ABC FAMILY)*

# DECEMBER

WORLD AIDS MONTH

- 6** Studio City Residents Association Holiday Parade
- 12** 1st Day of Hanukkah
- 17** Clara's Kids Christmas Tree Decorating
- 21** Winter Begins
- 25** Christmas
- 26** 1st Day of Kwanzaa
- 31** New Year's Eve

## Service Awards

# 30 Years



Joe Soukup



Kris Mouton



Bob Sheldon

# 20 Years



Jeff Truby



Pancho Lee



Sergio Garcia

# 10 Years



Herman Somera

## Kids and such

Cam Williams  
On the birth of your granddaughter  
Hannah Grace  
11-06-09  
Born to  
Beth and Jacob  
Masciave



## trivia question

How many tiles are there on the Studio City Walk of Fame?

ANSWER on page 4

# A LOT of Great Photography

CONTINUED FROM PAGE 1



Photo: Cliff Lipson/CBS ©2009 CBS Broadcasting Inc. All Rights Reserved.

"Gary Has A Dream"- Gary (Jay Mohr) tries to set an example for his unambitious son, Tom, by pursuing his own dream of becoming a radio sportscaster, on the second season premiere of *GARY UNMARRIED*, Wednesday, Sept. 23 (8:30-9:00 PM, ET/PT), on the CBS Television Network.

magazine, for which he has shot ten covers and thirteen fashion features. He recalls his favorite cover/fashion feature as the August 2009 issue with Neil Patrick Harris. "We shot in Rome, Venice and Paris, with the bulk of the fashion photography done on a railway platform while awaiting the arrival of the Venice-Simplon Orient Express. This particular train is the only existing train in the line that is refurbished, maintaining the original travel experience with its 1920s luxury feel. That was truly an amazing experience," said Lipson.

Lipson has also worked with the Showtime hit *Tracey Ullman's State of the Union* for all three seasons, photographing her many characters. This year is actually the first that both Lipson and Ullman were on the Radford lot together. Lipson was

brought in to photograph Tracey for the key art to promote the series.

Photographer Sonja Flemming, on staff for one and a half years, is the newest addition to the CBS Photography Department. This past summer she photographed the group and single shots for the summer season of *Big Brother*. Flemming also enjoys the convenience of shooting for CBS shows currently taping on the lot, but certainly does not mind making the occasional trip to places like Sacramento, where *The Mentalist* filmed on location, or Las Vegas, where she shot a *CSI* crime scene with the skyline in the background.

Thanks to the CBS photographers viewers and fans get a unique and exciting window into their favorite shows!

## Environmental Tips from

Pulp Art Surfaces

# THE GREEN SCENE



## DIMENSIONAL WALL SKINS HAVE EVOLVED

It began with a drive to make a difference and developed into a product with a purpose. From the minds of Dan Maltese and Scott Pitters to the sets of Hollywood, Pulp Art Surfaces brings you eco-friendly dimensional wall skins.

Michael Klausman, President of CBS Studio Center, played a vital role in the launch of Pulp Art Surfaces. When presented with this eco-friendly product, he immediately offered the support of CBS Studio Center.

Pulp Art Surfaces wall skins are made to look exactly like real masonry veneer with the same appearance as other dimensional wall skins, improved functionality, environmental sustainability and much more.

The appearance is realistic with updated designs made from new molds to create fine detail and crisp lines.

The fact that they are made in the USA from 100% recycled newspaper and cardboard makes Pulp Art Surfaces wall skins recyclable, compostable, Green Dot compliant and conformed to ISO 14000 standards. Durability is uncompromised with 3/16 to 3/8 inch thick wall and superior performance in vibration tests. They're flexible yet strong, and are unaffected by temperature and water.

Installation is simple. Pulp Art Surfaces wall skins are pre-trimmed with finger joints, easily painted with any paint product, don't require primer, are non-brittle and won't crack when stapled or nailed.

**Pulp Art Surfaces is located in the Room M1 in the Mill. Contact them today (ext. 5804) to help make your production "Green."**

They are a long way from home...  
They are alone in the hospital without family...



*Just a small donation on your part means so much to them  
you can interoffice a check to Project Hollywood Cares*



SUPPORTING OUR TROOPS  
DONATE TODAY • VOLUNTEER TOMORROW  
[www.projecthollywoodcares.org](http://www.projecthollywoodcares.org)

on the lot above the  
CBS Supply Station  
call Tom at ext. 5566

Full Catering Services Available!  
Special Sushi Parties - Cocktail Parties - Private Parties  
Buffet Style with Dessert Station

*Patio Sake Lounge*  
www.ahisushi.com

12915 Ventura Blvd. @ Coldwater Canyon  
Studio City, CA 91604 • 818-981-0277

**Catering**

**Delivery**  
to the lot for individual orders

**Take Out**


**Dining In**  
we're just moments away



**ITALIAN CAFE**

- Salads
- Pizzas
- Subs
- Pasta
- Chicken Dishes
- Seafood Dishes

10820 Ventura Boulevard  
Studio City • 818-762-4225  
www.zachscafe.com



PRINTED WITH VEGETABLE INKS ON RECYCLED PAPER CONTAINING A MINIMUM OF 10% POST-CONSUMER RECYCLED CONTENT

3962 LAUREL CANYON BOULEVARD • STUDIO CITY, CALIFORNIA 91604  
PHONE [ 818.509.0003 ] FAX [ 818.509.8932 ]

**nuprint & GRAPHICS, INC.**

FULL COLOR PRINTING • HIGH SPEED COPYING  
HEADSHOTS • COLOR OUTPUT • GRAPHIC DESIGN  
FILM OUTPUT • HEADSHOTS • STAPLING  
DIE-CUTTING • MATCHPRINTS • FOIL • LAMINATION  
BUSINESS CARDS • LABELS • POSTERS • SCANNING



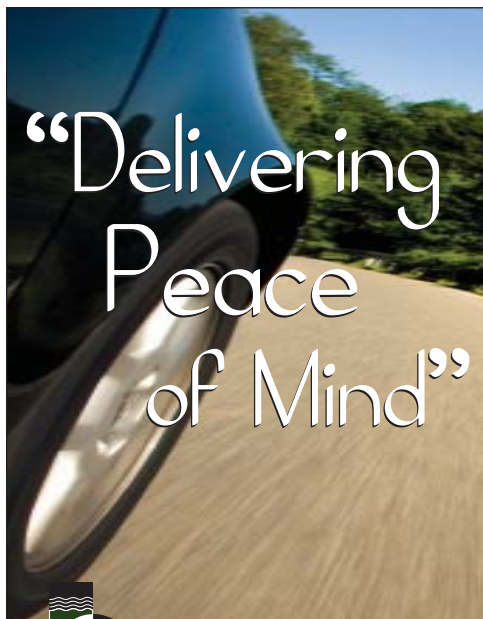
salon **Siné**  
studio city

10% discount for CBS employees


After 15 years in New York, European-trained stylist Maggie G, has opened her studio in Los Angeles.

Schedule Your Appointment Now:  
**818.760.9982**

professional hair services for men, women and children of all ages  
12021 ventura blvd. studio city, ca 91604  
next to artisan cheese gallery  
www.SalonSinE.com



“Delivering Peace of Mind”



great carma  
auto sales and leasing

818.970.3307  
Kenneth Roussel  
grtcarma@earthlink.net

To place ads in this publication... please call Marsha, Client Services at (818) 655-5099

	AD SIZES & RATES
Single	2.5" w x 1.5" tall .....\$50
Double	2.5" w x 3" tall .....\$100
Triple	2.5" w x 4.5" tall .....\$150
2xDouble	5.25" w x 3" tall .....\$200
2xTriple	5.25" w x 4.5" tall .....\$300

Artwork must be submitted in high res (300dpi) in pdf, psd, eps, tif or jpg.

File correction rates are billed at \$40/hour with a one hour minimum.



**Mexicali**  
COCINA • CANTINA

**CBS EMPLOYEES AND TENANTS ENJOY 30% OFF YOUR CHECK EVERYDAY 11:30 AM - 4:00 PM**

**(PLEASE PRESENT BADGE FOR DISCOUNT)**

12161 VENTURA BOULEVARD  
STUDIO CITY, CALIFORNIA 91604  
818-985-1744

(DOES NOT INCLUDE LOCO LUNCH, ALCOHOLIC BEVERAGES, TAKE-OUT OR ANY OTHER OFFER)

*World Famous*  
**Vitello's Restaurant**  
EST. 1964  
*Italian Cuisine*

Opera, Jazz or Cabaret Singers perform in one of our private music rooms throughout the week.

Private parties can be held "Upstairs at Vitello's" or in our festive "Green Room" both rooms have large screen TVs available for presentations.

**WE DELIVER!**

Show your CBS badge and save 15%  
(818) 769-0905  
www.vitellosrestaurant.com  
4349 Tujunga Ave, Studio City

**Lunch Hours**  
7 Days a Week  
12:30 am to 4:00 pm


**Dinner Hours**  
7 Days a Week  
Sunday thru Thursday  
4:00 pm to 10:00 pm  
Friday & Saturday  
4:00 pm to 11:00 pm




**Art et Fleur**

818.730.6750  
jojirose@artsetfleur.com

Event Planning  
Weddings  
Catering  
All Occasions  
Weekly Office & Lobby Installations



*trivia answer*

The Studio City Walk of Fame, installed in 2003, has 286 tiles representing the wide variety of films and television shows filmed on the CBS Studio Center lot.